

## Sun-Wizard Light Head:

- Housing and Dome...Optical Grade LEXAN SLX Polycarbonate offering 10 years without discolouration
- 2.4% Waste Up Light
- LEXAN SLX has a high impact strength and the highest UV resistance available today
- Positive Sealing. All components are enclosed in a compartment totally sealed from moisture and foreign matter (oil, dust, salt etc) using EPDM o'rings and a PTFE protection vent system
- Operating temperature -40°C to +100°C
- Weight 2.4Kg
- No Assembly required
- Maintenance: Minimal, clean with mild detergent

## Solar Panel:

- 4.5W Mono
- A Grade Cells
- Vmp 5.4V
- Imp 0.83A

## LED PCB:

- 6 x 5050 SMD OMD 6,500K
- Aluminium circuit board for improved heat dissipation
- Mounted in the top of the diffuser assembly for maximum on ground light, reduced glare and wasted up light
- Available in 595nm (Amber) Reptile Friendly

## Battery:

- Lithium LiFePO<sub>4</sub>
- 3.3V 12Ah
- Cycles - Expected minimum 10,000
- Operating temperature -30°C to +70°C (max safe temp 100°C)
- Aluminium casing



## Control PCB:

- Modern technology Printed circuit board designed in Australia by the manufacturer
- Operating Temperature range -40°C to +85°C
- Conformal coating
- Switch mode LiFePO<sub>4</sub> charge controller
- MPPT PV input
- Low voltage disconnect
- Over voltage protection
- Battery charge status indication, charging/full charge
- Auto conditioning of deeply discharged cells
- Buck Boost LED Driver for constant stable output
- 10 switchable light settings providing global coverage with one light assembly

## Light Output / Daily depth of Discharge / Autonomy ( Zero Charge)

D.D.D.= Daily Depth of Discharge of Battery

SETTING	LUMEN	12Hr D.D.D.	AUTONOMY	15Hr D.D.D.	AUTONOMY	AUTONOMY
0	18	6.57%	15.21 days	8.24%	12.13 days	181.95 Hrs
1	27	9.91%	10.00 days	12.41%	8.06 days	120.90 Hrs
2	36	13.15%	7.50 days	16.39%	6.00 days	91.00 Hrs
3	44	16.67%	6.00 days	20.84%	4.80 days	72.00Hrs
4	52	19.82%	5.05 days	24.72%	4.00 days	60.60 Hrs
5	61	23.43%	4.27 days	29.37%	3.40 days	51.00 Hrs
6	68	26.11%	3.83 days	32.69%	3.06 days	45.90 Hrs
7	74	29.91%	3.34 days	37.41%	2.67 days	40.00 Hrs
8	80	34.82%	2.87 days	43.52%	2.30 days	34.50 Hrs
9	88	38.98%	2.57 days	48.80%	2.00 days	30.75 Hrs

## Pole:

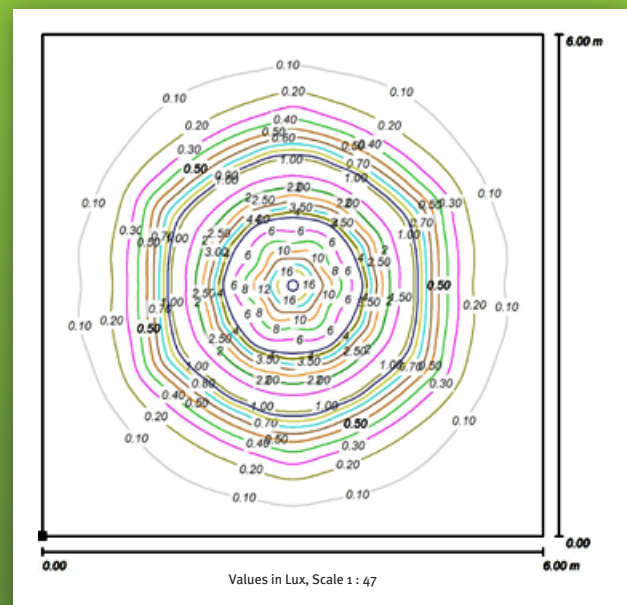
- 6061 T6 Grade Aluminium
- Unique internal strengthening ribs
- Light head location keyways and machined socket
- Clear 25um Anodised or Powder Coat Finish
- High Strength and Light Weight

## Security:

- Optional Unique KEY-REX security screw pattern licensed globally to Karmic Lighting

## Sun-Wizard Photometry:

Mounting height 820mm Light Setting 4



Dealer Details:



Manufactured By KARMIC LIGHTING Pty Ltd  
 3 Combarton Street  
 Brendale Queensland 4500 Australia.  
 Ph.+61 428 589 988  
 email: ian@karmiclighting.com.au  
[www.karmiclighting.com.au](http://www.karmiclighting.com.au)